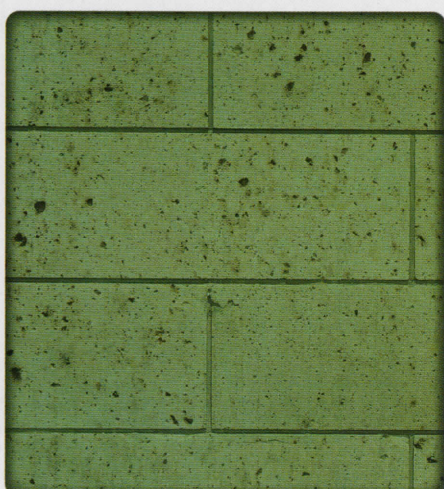
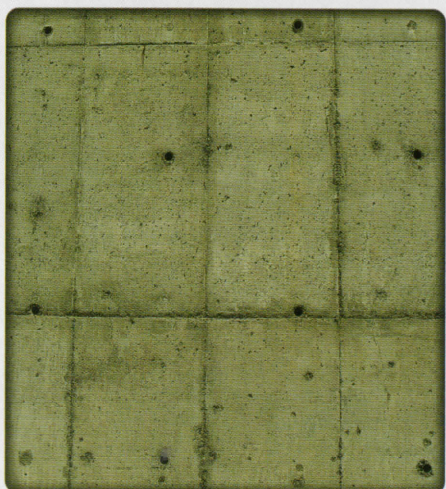
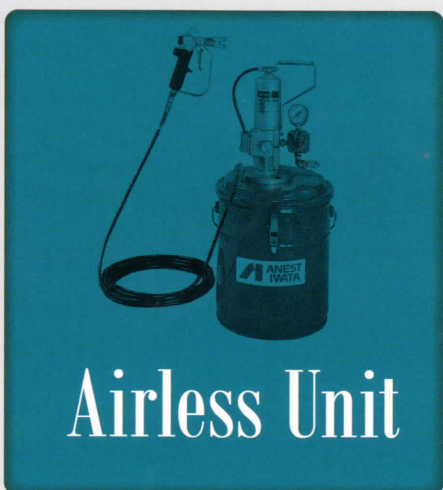
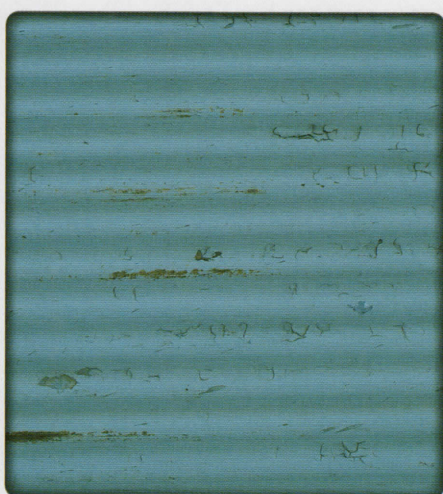


AIRLESS SPRAY UNIT



SMALL TYPE Small but tough design general purpo

ALS-123

Cart type
for Chassis Black paint
Max. applicable tank capacity : 14ℓ
(Tank total capacity : 21ℓ)



ALS-331B

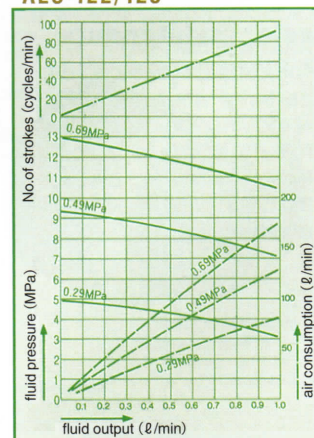
Stand type



ALS-122

Tank type
Max. applicable tank capacity : 14ℓ
(Tank total capacity : 21ℓ)

ALS-122/123



Note: 0.29/0.49/0.69MPa in graph shows air pressure.
*1MPa is about 10.2kgf/cm²

ALS-332B

Tank type

Max. applicable tank capacity: 32ℓ

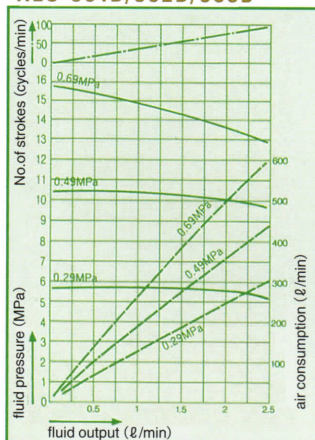
(Tank total capacity: 43ℓ)



ALS-333B

Cart type

ALS-331B/332B/333B



Note: 0.29/0.49/0.69MPa in graph shows air pressure.
*1MPa is about 10.2kgf/cm²

Model	ALS-122 Tank type	ALS-123 Cart type	ALS-331B Stand type	ALS-332B Tank type	ALS-333B Cart type	
Max. fluid pressure	MPa(kgf/cm ²)	13.7 (140)		17.2 (175)		
Max. fluid output	ℓ /min (US gal.)	1.0 (0.26)		2.5 (0.66)		
Pressure ratio		20 : 1		25 : 1		
Max. operating air pressure	MPa(kgf/cm ²)	0.69 (7)				
Fluid outlet	G (PF)	G 1/4 (PF 1/4 male)				
Air inlet	G (PF)	G 1/4 (PF 1/4 male)				
Length × Width × Height	mm (in)	330 × 315 × 655 (13.0 × 12.4 × 25.8)	450 × 325 × 860 (17.7 × 12.8 × 33.9)	335 × 385 × 820 (13.2 × 15.2 × 32.3)	375 × 385 × 825 (14.8 × 15.2 × 32.5)	430 × 420 × 870 (16.9 × 16.5 × 34.3)
Weight	kg (lbs)	10 (22)	12 (26.4)	18 (39.6)	20 (44)	23 (50.6)
Airless gun model		ALG-72		ALG-7	ALG-72	ALG-7
Fluid hose		5m (NHS-605D)	10m (NHN-310B)	10m (NHS-610D)		
Paint filter		—	—	TF-8	TF-81	TF-8
Standard accessory		—	Extension pipe (30cm), cart	Drain valve		

Note : Nozzle tip is not included. It is optional (Refer to back cover) .

MEDIUM TYPE



ALS-431B Stand type



ALS-432B Tank type
Max. applicable tank capacity: 32ℓ
(Tank total capacity: 43ℓ)



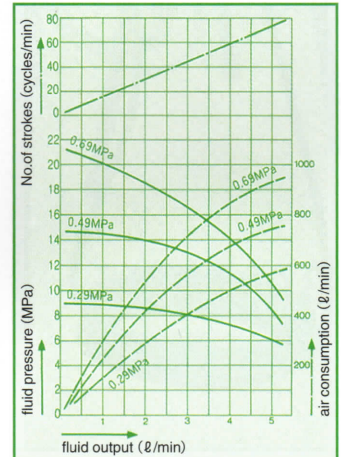
ALS-433B Cart type

MEDIUM TYPE HIGHEST PRESSURE TYPE

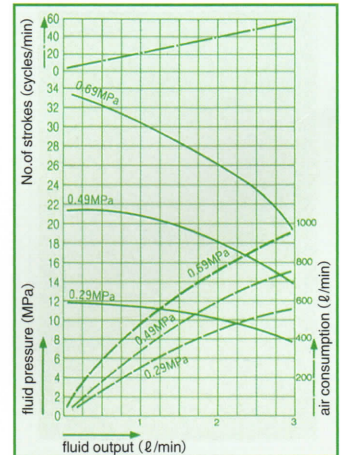


ALS-453B Cart type

ALS-431B/432B/433B



ALS-453B



Note: 0.29/0.49/0.69MPa in graph shows air pressure.
*1MPa is about 10.2kgf/cm²

Model	ALS-431B Stand type	ALS-432B Tank type	ALS-433B Cart type	ALS-453B Cart type	
Max. fluid pressure		20.6 (210)		36.3 (370)	
Max. fluid output		5.3 (1.4)		3.0 (0.79)	
Pressure ratio		30 : 1		53 : 1	
Max. operating air pressure		0.69 (7)			
Fluid outlet	G (PF)	G 1/4 (PF 1/4 male)			
Air inlet	G (PF)	G 1/4 (PF 1/4 male)			
Length × Width × Height	335 × 385 × 900 (13.2 × 15.2 × 35.4)	375 × 380 × 910 (14.8 × 15.0 × 35.8)	430 × 420 × 920 (16.9 × 16.5 × 36.2)	430 × 420 × 920 (16.9 × 16.5 × 36.2)	
Weight	26 (57.2)	27 (59.4)	34 (74.8)		
Standard accessory	Airless gun model	ALG-7	ALG-72	ALG-7	
	Fluid hose	10m (NHS-610D)			10m (NHH-610 High pressure)
	Paint filter	TF-8	TF-81	TF-8	TF-9 (High pressure)
	Drain valve	Equipped			

Note : Nozzle tip is not included. It is optional (Refer to back cover)

BIG TYPE

ALS-653 Cart type

Large capacity allows for extra guns.

- For medium and heavy viscosity material and capable of supporting multiple guns with small tip sizes.
- To deliver extra volume to high build-up coatings.

Most suitable for heavy viscosity material.

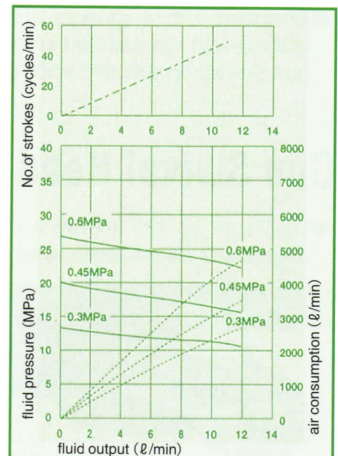
- For highly viscous, hard to atomize paints.
- For painting high or hard-to-reach places through long material hoses.



Model		ALS-653 Cart type
Max. fluid pressure	MPa(kg/cm ²)	27 (275)
Max. fluid output	ℓ /min (US gal.)	12.5 (3.3)
Pressure ratio		45 : 1
Max. operating air pressure	MPa (kg/cm ²)	0.6 (6.1)
Fluid outlet	G (PF)	G 1/4 (PF 1/4 male)
Air inlet	G (PF)	with Air Quick Joint (1/2 Air hose)
Length × Width × Height	mm (in)	800 × 730 × 1200 (31.5 × 28.74 × 47.24)
Weight	kg (lbs)	86 (189)
Standard accessory	Paint filter (Intermediate and intake)	Both equipped
	Drain valve	Equipped

Note : Airless spray gun, nozzle tip and fluid hose are not included. They are optional (Refer to page 10, 11 and back cover)

ALS-653



Note: 0.29/0.49/0.69MPa in graph shows air pressure.

