



PROFESSIONAL
COATING
EQUIPMENT
SPECIALIST

2023 CATALOGUE

COATING
EQUIPMENT FOR
**GENERAL
INDUSTRY**



PASSION FOR PAINTING

We are passionate about painting and eager about creating; for this, we design spray guns which help you to cross any boundary.

GROUP

Anest Iwata carries more than 90 years-experience in the coating industry, combining the most sophisticated Japanese craftsmanship tradition to the continuous search for leading-edge technology.

PASSION & PERFORMANCE

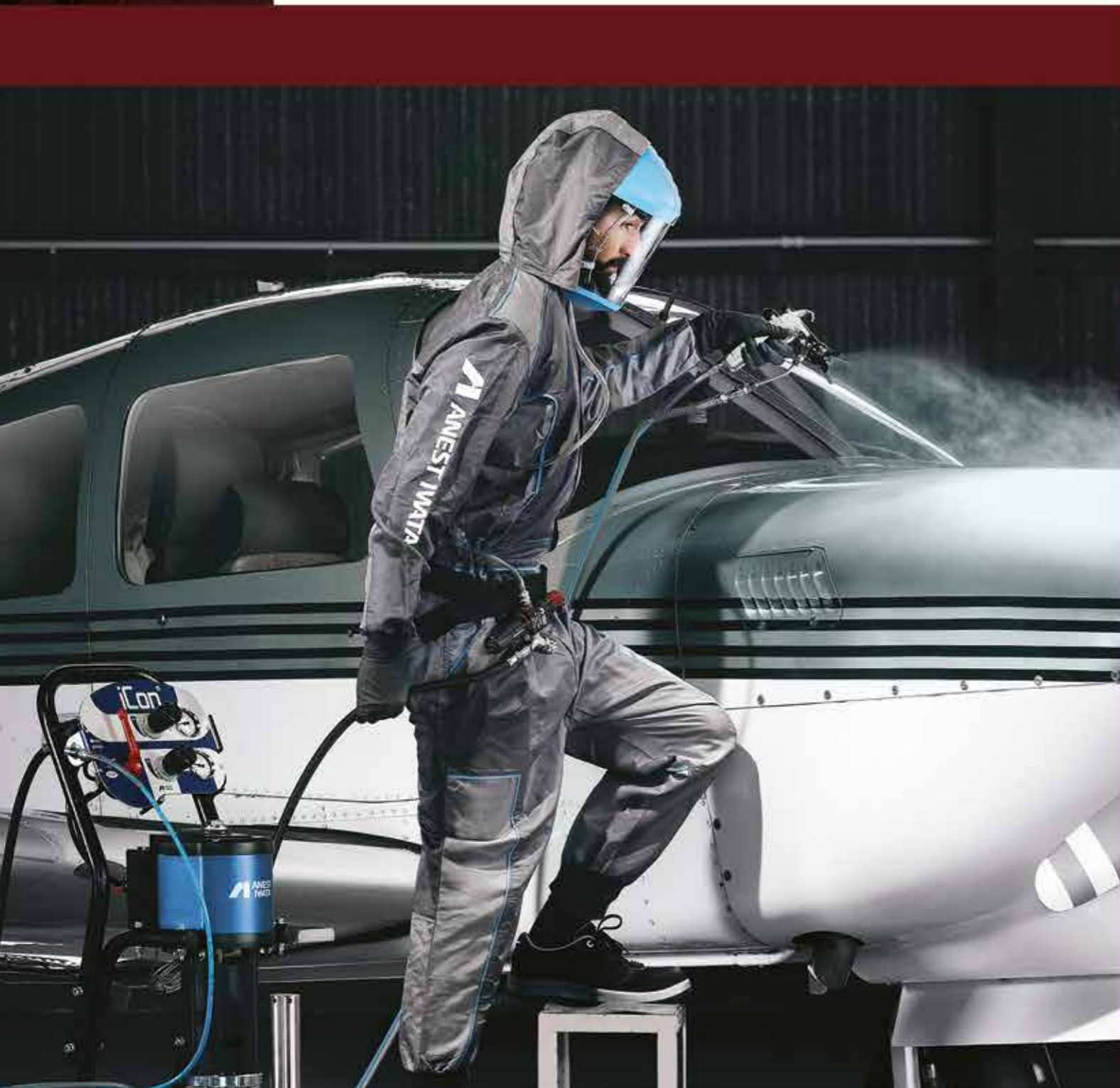
As a global group we aim to deliver the most technically advanced spraying equipment on the market. When designing our products we think about highly professional and creative individual who have passion for painting and are looking for the greatest performance. With this in mind we always try to reach for the highest standards of sophistication, creativity and technical realization.

A WIDE RANGE

Our range of products varies from several spray guns lines, pumps and painting accessories, projected ad hoc for different paint application and to satisfy the customer in his research for the best solution.

CUSTOMER ORIENTED

The automotive refinish, together with the industrial and the wood sector are only few of the areas in which the Anest Iwata experience has found its appreciation between the users, not only for the excellence of our tools, but also for the attentive service our customers can count on. Anest Iwata effort in providing the best results in performance is also conceived for the optimization of the resources and materials in the optic of begin environmental-friendly.





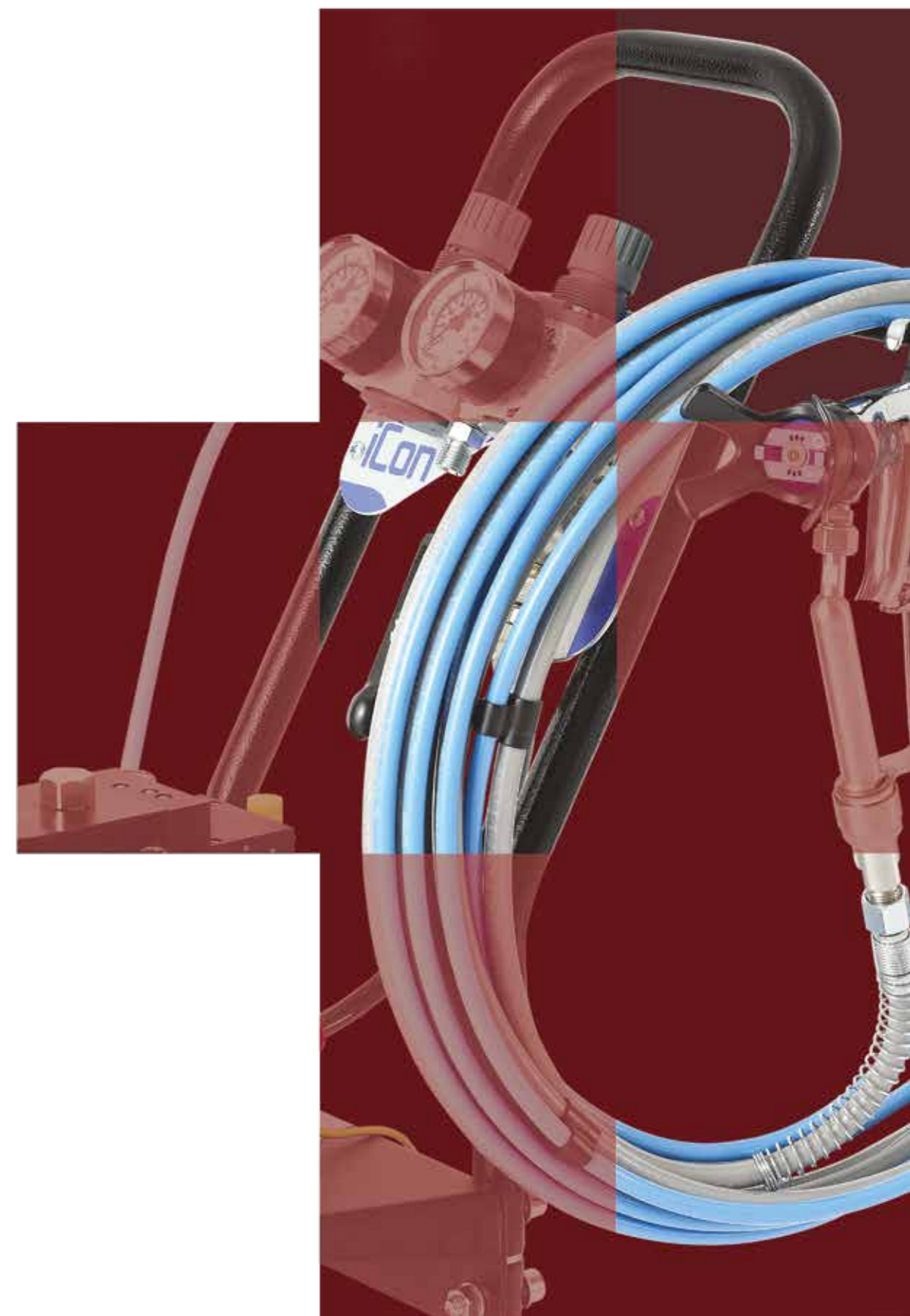
JAPANESE HERITAGE & PIONEER MINDS

Whether it's a first installation, a self-repair or a small retouch (spot repair) Anest Iwata has always been the point of reference for professional painters. The experience in the development of varnishing guns for the automotive sector has strengthened its image over time.



4. PAINT SUPPLY SYSTEM

HIGH
PRESSURE
PNEUMATIC
EQUIPMENTS



MULTI SPRAY GUNS

MSGGS-200 EVO MULTI SPRAY GUN SERIES

MULTI SPRAY GUN with SHORT & LONG FILTER

Premium Quality Multi Spray Gun series. The MSGGS-200 combines the advantage of Airless Technology (speed, low overspray) with the advantages of HVLP Technology, resulting in a product with high Transfer Efficiency and excellent finish quality. Available in two different version: with short filter for standard application and with long filter for intensive applications.

MSGGS-200 EVO

TECHNICAL DATA	LONG FILTER	SHORT FILTER
Max. Fluid Pressure:	(120 bar) or (250 bar)	
Max. Air Pressure:	7.0 bar	
Air inlet joint:	G1/4"	
Fluid inlet joint:	(NPSM 1/4") or (JIC 1/2")	
Paint filter:	100 Mesh (standard)	
Working Temperature range:	5~40 °C	

Smart
Spray Tip Guard



DON'T USE
MORE THAN 50 Bar!



Long
FILTER

Short
FILTER

ORDER INFORMATION

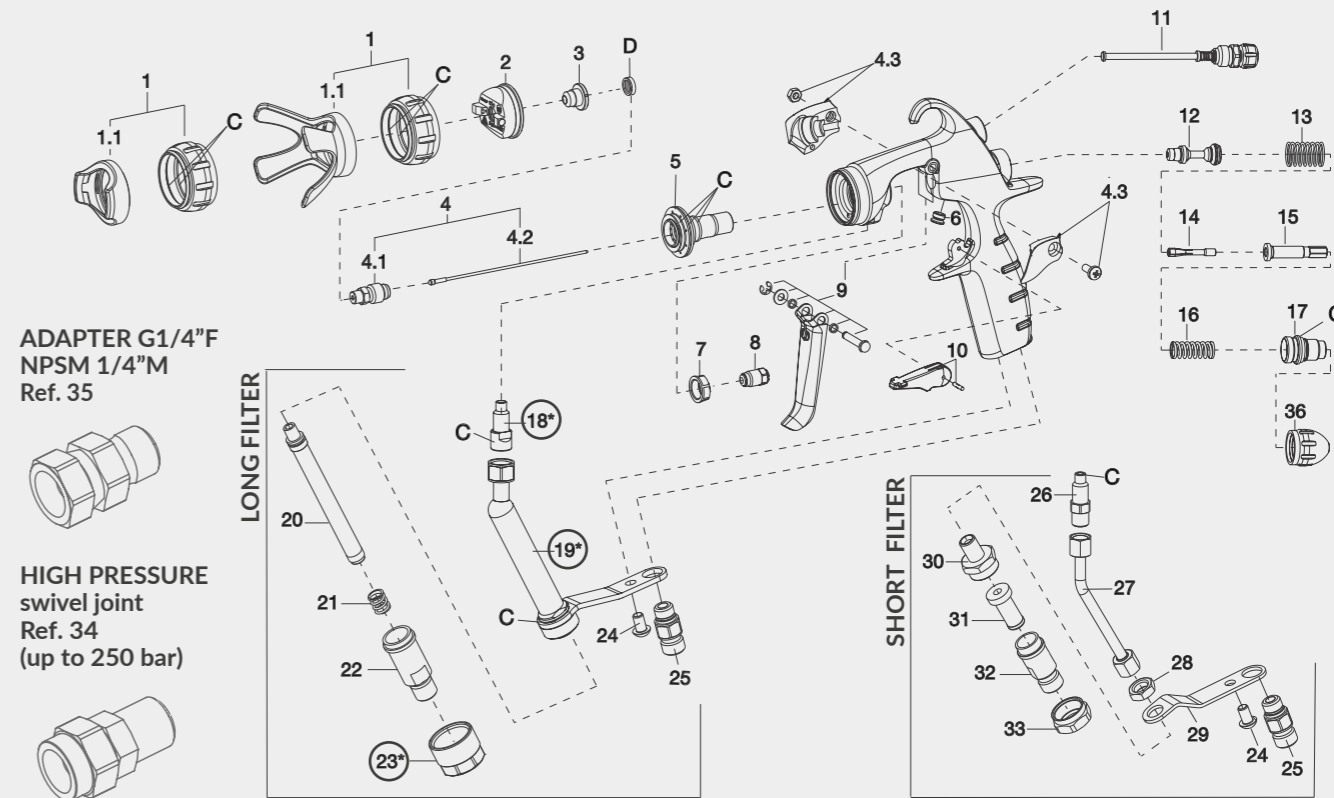
120 BAR

MSGGS-200 EVO - NPSM 1/4"		mesh	TYPE	bar	bar	g
13001040	MSGGS-200 EVO 120 SN MULTI SPRAY GUN	100 Mesh	SHORT	120	7.0	537
13001050	MSGGS-200 EVO 120 LN MULTI SPRAY GUN	100 Mesh	LONG	120	7.0	584
MSGGS-200 EVO - JIC 1/2"		mesh	TYPE	bar	bar	g
13000250	MSGGS-200 EVO 120 SJ MULTI SPRAY GUN	100 Mesh	SHORT	120	7.0	537
13000240	MSGGS-200 EVO 120 LJ MULTI SPRAY GUN	100 Mesh	LONG	120	7.0	584

250 BAR

MSGGS-200 EVO - NPSM 1/4"		mesh	TYPE	bar	bar	g
13001060	MSGGS-200 EVO 250 SN MULTI SPRAY GUN	100 Mesh	SHORT	250	7.0	545
13001070	MSGGS-200 EVO 250 LN MULTI SPRAY GUN	100 Mesh	LONG	250	7.0	587
MSGGS-200 EVO - JIC 1/2"		mesh	TYPE	bar	bar	g
13000270	MSGGS-200 EVO 250 SJ MULTI SPRAY GUN	100 Mesh	SHORT	250	7.0	545
13000260	MSGGS-200 EVO 250 LJ MULTI SPRAY GUN	100 Mesh	LONG	250	7.0	587

HIGH PRESSURE



ADAPTER G1/4"F
NPSM 1/4"M
Ref. 35

HIGH PRESSURE
swivel joint
Ref. 34
(up to 250 bar)

SPARE PARTS

REF.	CODE	DESCRIPTION	MODEL
1	93004420	AIR CAP COVER	
1-1	93004430	SPRAY TIP GUARD	
1	93004490	AIR CAP COVER	SHORT TYPE
1-1	93004500	SPRAY TIP GUARD	Less than 50 bar!
2	93004320	AIR CAP	
3		NOZZLE TIP	All sizes in the TIP CHART
4	93004160	FLUID NOZZLE + FLUID NEEDLE SET	
4-1	93004170	FLUID NOZZLE	
4-2	93004450	FLUID NEEDLE	
4-3	930336A0	NEEDLE PROTECTION KIT	
5	93004230	NOZZLE HOLDER	
6	93004310	PLUG	
7	93004300	NUT	
8	93004410	NEEDLE PACKING SET	
9	93004200	TRIGGER SET	
10	93004190	SAFETY LOCK SET	
11	93004290	PATTERN ADJUSTMENT	
12	93004260	AIR VALVE	
13	93004330	AIR VALVE SPRING	
14	93004240	COLLET	
15	93004250	NEEDLE BUSHING	
16	93004270	NEEDLE SPRING	250 bar
	93004150	NEEDLE SPRING	120 bar
17	93004280	NEEDLE GUIDE	
18*	930144A0	LONG FILTER JOINT	LONG FILTER
19*	930140A0	LONG FILTER CASE	LONG FILTER
	VFM2002	FILTER 50 MESH	
	VFM2004	FILTER 100 MESH	LONG FILTER
	VFM2005	FILTER 150 MESH	LONG FILTER
	VFM2006	FILTER 200 MESH	LONG FILTER

REF.	CODE	DESCRIPTION	MODEL
21	93004380	FILER SPRING	
	93004360	FILTER JOINT G1/4"	
22	93002270	FILTER JOINT JIC 1/2"	LONG FILTER
	93005670	FILTER JOINT NPSM 1/4"	
23*	930138A0	FILTER NUT	
24	93004350	SCREW	
25	93004340	AIR NIPPLE G1/4"	
26	93004530	FLUID JOINT	
27	93004130	FLUID TUBE	
28	93514240	NUT	
29	93004140	PLATE	
30	93514230	SHORT FILTER CASE	
	VFM2801/S	FILTER 60 MESH	SHORT FILTER
31	VFM2802/S	FILTER 100 MESH	SHORT FILTER
	VFM2803/S	FILTER 200 MESH	SHORT FILTER
	93515230	FILTER JOINT G1/4"	
32	93002280	FILTER JOINT JIC 1/2"	
	93005680	FILTER JOINT NPSM 1/4"	
33	93516230	FILTER NUT	
C	93004210	PACKING SET	(8 pcs./1 pk.)
D	93004850	TIP FILTER SET	(5 pcs./1 pk.)
D	93004860	TIP PACKING SET	(5 pcs./1 pk.)
	03004520	SWIVEL JOINT - GAS	
	93005960	SWIVEL JOINT - NPSM	
35	94006030	ADAPTER G1/4"F - NPSM 1/4"M	
36	93004400	PLUG	
	930155A0	LONG FILTER UPGRADE KIT (18* + 19* + 23*)	

MSGGS-200 EVO MULTI SPRAY GUNS



MULTI SPRAY NOZZLE TIPS CHART

MSGGS-200
evo

NOZZLE TIP

APPLICATION	°Angle	10°		20°		30°		40°		50°	
	Ø inch (mm)	Mark	Code	Mark	Code	Mark	Code	Mark	Code	Mark	Code
NATURAL AND CLEAR PAINTS, OILS, RELEASE AGENTS, STAINS	0,007 (0,18)	0710	14216770	0720	14216830	0730	14216910	0740	14216521		
	0,009 (0,23)	0910	14216780	0920	14216840	0930	14216920	0940	14216541	0950	14216551
SYNTETIC RESIN AND PVC PAINTS, SOLVENT AND WATER PAINTS	0,011 (0,28)	1110	14216790	1120	14216850	1130	14216930	1140	14216581	1150	14216591
PRIMER, FILLER, RUST PROTECTION PAINTS, LATEX PAINTS, DISPERSION PAINTS, ROOF COATINGS, GLUE	0,013 (0,33)	1310	14216800	1320	14216860	1330	14216940	1340	14216621	1350	14216631
	0,015 (0,38)	1510	14216810	1520	14216870	1530	14216950	1540	14216671	1550	14216681
	0,016 (0,41)	1610	14216820	1620	14216880	1630	14216960	1640	14216710	1650	14216720
	0,018 (0,46)			1820	14216890	1830	14216970	1840	14216571	1850	14216761
	0,020 (0,50)					2030	14216980	2040	14215920	2050	14215830
	0,022 (0,56)			2220	14216900	2230	14216990	2240	14215930	2250	14215840
	0,024 (0,61)					2430	14217000	2440	14215940	2450	14215850
	0,027 (0,69)							2740	14215950	2750	14215860
	0,029 (0,74)							2940	14215960	2950	14215870
	0,031 (0,79)							3140	14215970	3150	14215880
FLAME RETARDANT, SPRAY PUTTY, CORROSION PROTECTION, FILLED COLOURS	0,033 (0,84)										
	0,035 (0,89)							3540	14215980	3550	14215890
	0,039 (0,99)									3950	14215900
	0,041 (1,04)										

SELECTION CHART



60°		70°		80°		90°		LONG FILTER		SHORT FILTER	
Mark	Code	Mark	Code	Mark	Code	Mark	Code	Code	Code	Code	Code
								VFM2006 200 Mesh (74µ)			
									VFM2005 150 Mesh (100µ)	VFM2803/S 200 Mesh (74µ)	
1160	14215680	1170	14118410								
1360	14215690	1370	14118420	1380	14215560						
1560	14215700	1570	14118430	1580	14215570			VFM2004 100 Mesh (149µ)			VFM2005 150 Mesh (100µ)
1660	14215710	1670	14118440	1680	14215580	1690	14118310		VFM2003 65 Mesh (274µ)		
1860	14215720	1870	14118450	1880	14215590	1890	14118320				
2060	14215730	2070	14215910	2080	14215600	2090	14118330				
2260	14215740	2270	14216430	2280	14215610	2290	14118340				
2460	14215750	2470	14216440	2480	14215620	2490	14118350				
2760	14215760	2770	14216450	2780	14215630	2790	14118360				
2960	14215770	2970	14216460	2980	14215640	2990	14118370				
3160	14215780	3170	14216470	3180	14215650	3190	14118380				
3360	14215790										
3560	14215800	3570	14216480	3580	14215660	3590	14118390	VFM2001 30 Mesh (595µ)			
3960	14215810										
4160	14215820	4170	14216490	4180	14215670	4190	14118400				



Long FILTER

Short FILTER



MULTI SPRAY UNITS

ICON-M433N and ICON-M333N KIT

iCon® MULTI SPRAY KIT

FEATURES

STANDARD VERSIONS ARE ASSEMBLED ON CART

The kit includes:

- Icon Multi Spray Pump
- Multi Spray Gun MSGS-200
- Conductive high pressure Twin Hose NHT-25075 N IC (Air/Fluid)

AVAILABLE with
SUCTION HOSE
or **HOPPER SET**



NTH-25075 N IC
code: 14000520

ORDER INFORMATION

CODE	MODEL	RATIO	FLUID OUTPUT		TYPE	MAX. FLUID PRESS.	GUN MODEL	TYPE OF FILTER	TWIN HOSES
ICON-M433N MULTI SPRAY UNIT									
							MSGS-200 Multi Spray Gun		
14000140	ICON-M433N-S1	36:1	88 ml/cyc	5,2 l/min	SUCTION HOSE SET	252 bar	MSGS-200-250L	Long - 100 Mesh	NHT-25075 N IC (7.5 m)
14000180	ICON-M433N-S2						MSGS-200-250S	Short - 100 Mesh	
14000190	ICON-M433N-S3						MSGS-200-120L	Long - 100 Mesh	
14000200	ICON-M433N-S4						MSGS-200-120S	Short - 100 Mesh	
14000550	ICON-M433N-S5	36:1	88 ml/cyc	5,2 l/min	HOPPER SET	252 bar	MSGS-200-250L	Long - 100 Mesh	NHT-25075 N IC (7.5 m)
14000560	ICON-M433N-S6						MSGS-200-250S	Short - 100 Mesh	
14000670	ICON-M433N-S7						MSGS-200-120L	Long - 100 Mesh	
14000680	ICON-M433N-S8						MSGS-200-120S	Short - 100 Mesh	
ICON-M333N MULTI SPRAY UNIT									
							MSGS-200 Multi Spray Gun		
14000150	ICON-M333N-S1	32:1	60 ml/cyc	3,6 l/min	SUCTION HOSE SET	224 bar	MSGS-200-250L	Long - 100 Mesh	NHT-25075 N IC (7.5 m)
14000210	ICON-M333N-S2						MSGS-200-250S	Short - 100 Mesh	
14000220	ICON-M333N-S3						MSGS-200-120L	Long - 100 Mesh	
14000230	ICON-M333N-S4						MSGS-200-150S	Short - 100 Mesh	
14000530	ICON-M333N-S5	32:1	60 ml/cyc	3,6 l/min	HOPPER SET	224 bar	MSGS-200-250L	Long - 100 Mesh	NHT-25075 N IC (7.5 m)
14000540	ICON-M333N-S6						MSGS-200-250S	Short - 100 Mesh	
14000700	ICON-M333N-S7						MSGS-200-120L	Long - 100 Mesh	
14000710	ICON-M333N-S8						MSGS-200-120S	Short - 100 Mesh	

WALL MOUNT CONVERSION KIT

CODE	DESCRIPTION
04005460	WALL MOUNT CONVERSION KIT
ACCESSORIES	
04005870	HOPPER SET G1 (6 lt.) for ICON-M433N
04005510	HOPPER SET G1/2" (6 lt.) for ICON-M333N



HIGH PRESSURE



ICON-M433N and ICON-M333N UNITS

iCon® MULTI SPRAY PUMPS



From general wood and metal painting to exterior surface coating up to boat repair, ICON® Multi Spray Pumps for medium to high pressure applications are ideally suited to the requirements of the industrial sector. ICON® Pumps' strong points are their extremely simple assembly, disassembly, and maintenance, along with their excellent reliability.

FEATURES

STANDARD VERSIONS ARE ASSEMBLED ON CART

- 2 Air Pressure Regulators (one for the Pump and one for the Spray Gun)
- Delivery Paint Filter (TF-8N)
- Dip Tube with Filter
- Fluid Recirculation Hose
- Overpressure Safety Valve

AVAILABLE with
SUCTION HOSE
or **HOPPER SET**



ORDER INFORMATION

CODE	MODEL	CONFIGURATION
14050230	ICON-M433N	MULTI SPRAY UNIT with STAINLESS STEEL Fluid Passages (36:1) Supplied with SUCTION HOSE SET
14000690	ICON-M433N-S9	MULTI SPRAY UNIT with STAINLESS STEEL Fluid Passages (36:1) Supplied with HOPPER SET (6 lt.)
14050240	ICON-M333N	MULTI SPRAY UNIT with STAINLESS STEEL Fluid Passages (32:1) Supplied with SUCTION HOSE SET
14000720	ICON-M333N-S9	MULTI SPRAY UNIT with STAINLESS STEEL Fluid Passages (32:1) Supplied with HOPPER SET (6 lt.)

TECHNICAL DATA		ICON-M433N	ICON-M333N
Plunger Pump:		PP-3688N	PP-3260N
Weight:		46.5 Kg	40 Kg
Dimensions (LxWxH):		496 x 627 x 1164 mm	
Paint Filter:	Delivery Paint Filter	TF-8N (100 Mesh)	
	Fluid Suction Filter	15 mesh	50 mesh
Max. Fluid Working Pressure:		252 bar (25.2 MPa)	224 bar (22.4 MPa)
Max. Air Inlet Pressure:		7.0 bar (0.7 MPa)	
Pressure Ratio:		36:1	32:1
Working Temperature:		5°-40° C	
Noise Level:		99.7 dB(A)	97.2 dB(A)
Compressor Required Power:		> 1.5 Kw	
Fluid Output:	Max. Fluid Delivery	88 ml	60 ml
	Max. Volume/Min.	5.2 l/min	3.6 l/min
No. Of Cycles Per Minute		60 cyc	
Air Supply Nipple (To Gun)		G1/4"	
Air Supply Nipple (To Pump)		G1/4"	
Fluid Supply Nipple (To Gun)		NPSM 1/4"	

MULTI SPRAY ICON PUMPS



ICON-M233N MULTI SPRAY PUMP

Some serious jobs require a good partner, and the **Multispray** versions of the **Anest Iwata IconX-3 series** were developed to be your best workmate during long days of painting. The new cart frame design has the wall support mounted inside and it can work both with the **Suction Hose** or the **Hopper** to be as versatile as possible and meet your requirements.

The Pump is compact and therefore easily transportable, thanks to its new compact filter but at the same time its 30:1 ratio will allow you to work with the most viscous paints. Make sure to check out our highly compelling and economical X-3 Kits, consisting of the new Icon X-3 Pump, an **MSGS-200 EVO Multi Spray Gun** plus one of our updated High-Pressure Hoses.

FEATURES

- New Delivery Paint Filter TF-1S (w/100 mesh filter)
- Suction Hose with filter or Hopper set (6 lt.)
- All wetted parts in stainless steel
- Fluid valve seats in carbide
- Hard chromed plate surfaces inside
- Self-adjusting V packings



TECHNICAL DATA		ICON-M233N
PRESSURE RATIO:		30:1
MAX. FLUID WORKING PRESSURE:		210 bar (21 MPa)
MAX. AIR INLET PRESSURE:		7.0 bar (0.7 MPa)
AIR CONSUMPTION:		110 NI/min. at 30 cyc/min.
FLUID OUTPUT:	MAX. FLUID DELIVERY	25 ml
	MAX. VOLUME/MIN.	2.5 l/min.
MAX. NO. OF CYCLES PER MIN.		100 cyc

The unit is delivered on a **CART FRAME** which by design includes the **WALL MOUNT**



ICON-M233N MULTI SPRAY KIT

CONFIGURATION of the ICON M233N KIT

- ICON PUMP assembled either on **Cart Frame** or **Wall Mount**
- 2 Air Pressure Regulators** (1 for the pump, 1 for the gun)
- Delivery Paint Filter TF1-S** (w/100 mesh filter)
- Suction Hose** (w/50 mesh filter) or **Hopper Set 6 lt.** (w/50 mesh filter)
- High Pressure Twin Hose**
- Multi Spray Gun **MSGS-200 EVO**



ORDER INFORMATION

MODEL	CODE	ASSEMBLED WITH:	MULTI SPRAY GUN	GUN FILTER	TWIN HOSE 7.5m
ICON-M233N MULTI SPRAY PUMP and KIT assembled on CART FRAME					
ICON-M233N-S	140012A0	SUCTION HOSE (w/50 mesh filter)	-	-	-
ICON-M233N-S1	140003A0		MSGS 200 EVO -250LN	LONG - 100 Mesh	NHT-25075 N IC 14000520
ICON-M233N-S2	140004A0		MSGS 200 EVO -250SN	SHORT - 100 Mesh	
ICON-M233N-H	140007A0	HOPPER SET (6lt.) (w/50 mesh filter)	-	-	-
ICON-M233N-H1	140008A0		MSGS 200 EVO -250LN	LONG - 100 Mesh	NHT-25075 N IC 14000520
ICON-M233N-H2	140009A0		MSGS 200 EVO -250SN	SHORT - 100 Mesh	
ICON-M233N MULTI SPRAY PUMP and KIT assembled on WALL MOUNT					
ICON-M233N-SWM	140019A0	SUCTION HOSE (w/50 mesh filter)	---	---	---
ICON-M233N-SWM1	140015A0		MSGS 200 EVO -250LN	LONG - 100 Mesh	NHT-25075-N 14000470
ICON-M233N-SWM2	140016A0		MSGS 200 EVO -250SN	SHORT - 100 Mesh	
ICON-M233N-HWM	140024A0	HOPPER SET (6 lt.) (w/50 mesh filter)	---	---	---
ICON-M233N-HWM1	140020A0		MSGS 200 EVO -250LN	LONG - 100 Mesh	NHT-25075-N 14000470
ICON-M233N-HWM2	140021A0		MSGS 200 EVO -250SN	SHORT - 100 Mesh	






5. PAINT SUPPLY SYSTEM

HIGH PRESSURE
AIRLESS EQUIPMENTS



AIRLESS SPRAY GUN

AL96-S5 AUTOMATIC AIRLESS SPRAY GUN

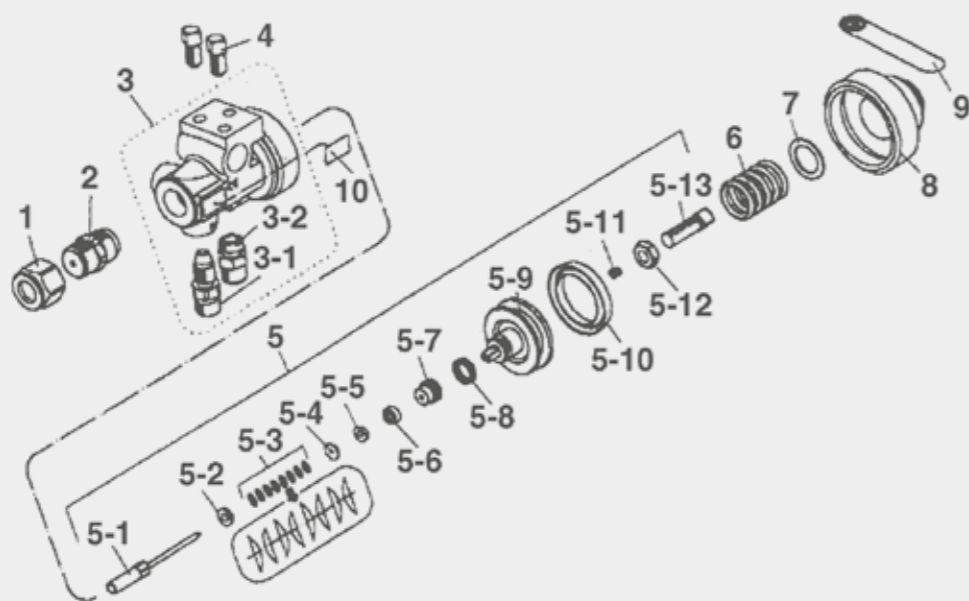
TECHNICAL DATA			
NOZZLE TIP NOT INCLUDED			
AL96-S5	250	7.0	480

• Air nipple: G1/4" • Fluid nipple: G1/4"



ORDER INFORMATION

CODE	CONFIGURATION
13698520	AL96-S5 AUTOMATIC SPRAY GUN



NOZZLE TIP
Reference P. 91

SPARE PARTS




REF.	CODE	DESCRIPTION	MODEL
	94966400	TIP PACKING	
1	93547180	NOZZLE HOLDER	(11/16") AL96-S5
2	93545180	NOZZLE GLAND	(11/16") AL96-S5
1	03503170	NOZZLE HOLDER	(M18x1.5) AL96
2	93803170	NOZZLE GLAND SET	(M18x1.5) AL96
3-1	03161590	FLUID NIPPLE	
3-2	03512580	AIR NIPPLE	
4	03811580	BOLT SET	
5	93906590	NEEDLE SET	
5-1	93808170	NEEDLE BAR SET	
5-2	03504180	SPRING HOLDER	
5-3	03844170	CONICAL SPRING WASHER	(8 pcs./1 pk.)
5-4	03067951	PACKING HOLDER	
5-5 - 5-6	03846170	NEEDLE PACKING SET	
5-7	03505180	NEEDLE PACKING SEAT	

REF.	CODE	DESCRIPTION
5-8	06996607	MINI 'Y' PACKING
5-9	03932590	PISTON SET
5-10	93029591	PISTON PACKING
5-11	06994603	SCREW
5-12	06383086	HEXAGON NUT
5-13	06120810	SCREW
6	03223600	PISTON SPRING
7	03182590	COLLAR
8	03225600	PISTON SPRING HOLDER
	93978600	TIP FILTER (OPTIONAL)
11	03174780	TIP FILTER
12	03590600	FILTER ADAPTOR
13	04591460	PACKING
	VFM2802/B	FILTER 100 Mesh

HIGH PRESSURE



ALG7 TE WB | AIRLESS MANUAL SPRAY GUN

TECHNICAL DATA			
NOZZLE TIP NOT INCLUDED			
ALG7 TE WB	250	100	440

• Fluid nipple: G1/4"



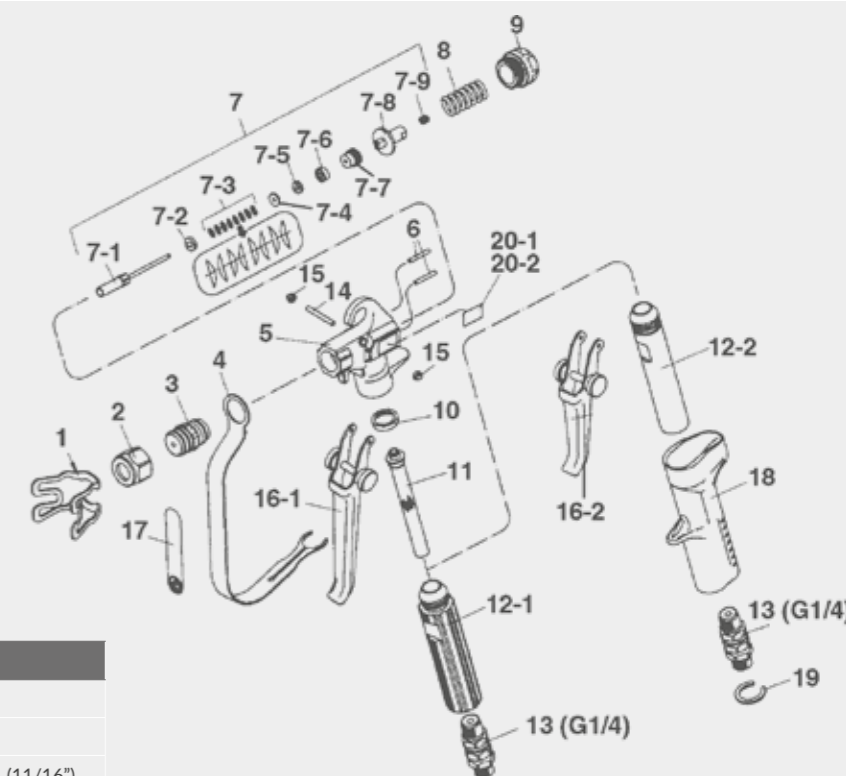
ORDER INFORMATION

CODE	DESCRIPTION	TRIGGER
13088270	ALG7 TE WB AIRLESS MANUAL SPRAY GUN	4 fingers
13088280	ALG72 TE WB AIRLESS MANUAL SPRAY GUN	2 fingers

NOZZLE TIP
Reference P. 91

SPARE PARTS

REF.	CODE	DESCRIPTION
	94966400	TIP PACKING
1	03501170	HAND GUARD
2	93547180	NOZZLE HOLDER (11/16")
3	93545180	NOZZLE GLAND SET UNIVERSAL (11/16")
4	93504170	SAFETY GUARD
6	03502180	NEEDLE SEAT
7	93807170	NEEDLE SET
7-1	93808170	NEEDLE BAR SET
7-2	03504180	SPRING HOLDER
7-3	03844170	CONICAL SPRING WASHER (8 pcs./1 pk.)
7-4	03067951	PACKING HOLDER
7-5, 7-6	03846170	NEEDLE PACKING SET
7-7	03505180	NEEDLE PACKING SEAT
7-8	03500190	NEEDLE SPRING HOLDER
7-9	06994603	SCREW
8	03501190	NEEDLE SPRING



REF.	CODE	DESCRIPTION
9	93074790	NEEDLE SPRING SEAT
10	03529180	PACKING
11	VFM2008	FILTER 100 Mesh Yellow
12-1	03503190	HANDLE ALG 7 WB
12-2	93511180	HANDLE ALG 72 WB
13	93003951	UNIVERSAL JOINT G 1/4"
14	03504190	TRIGGER STUD
15	06994103	HEX. CAP NUT
16-1	03805180	TRIGGER SET (4 fingers) ALG 7 WB
16-2	93806180	TRIGGER SET (2 fingers) ALG 72 WB
18	93507190	OUTER HANDLE
19	03525170	STOPPER ALG 72 WB

AIRLESS SPRAY GUN



EXTRUSION GUN HIGH PRESSURE

FG 61 | FG 62 EXTRUSION GUN

TECHNICAL DATA			
NOZZLE TIP NOT INCLUDED			
FG-61	250	3.0	440
FG-62			



• Air nipple: G1/4" (FG 61) • Fluid nipple: G3/8" (FG 62)

ORDER INFORMATION

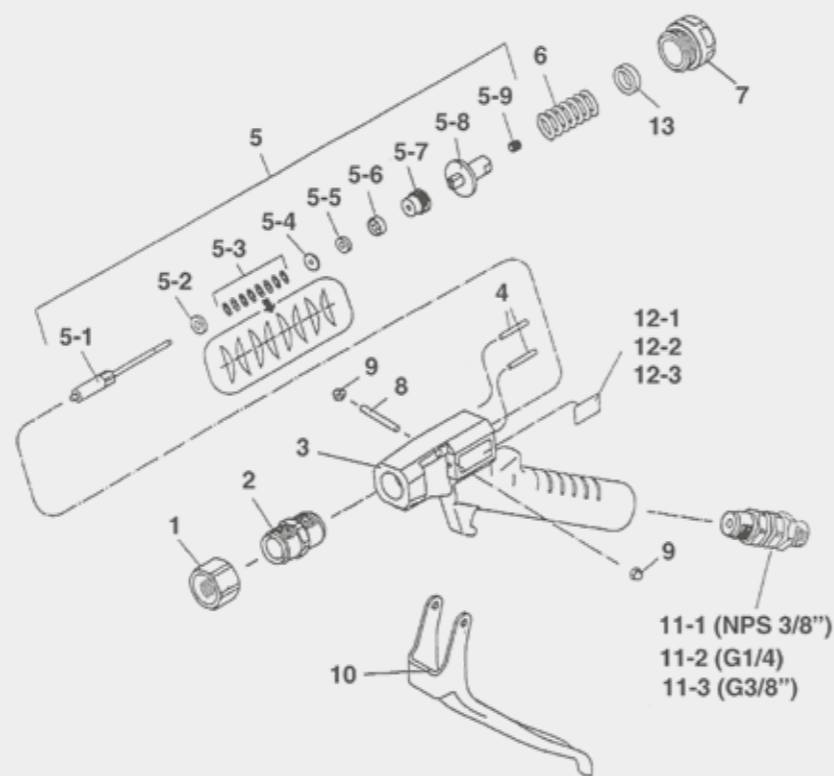
CODE	CONFIGURATION
13398260	FG 61 EXTRUSION FLOW GUN (FLUID NIPPLE 1/4")
13398270	FG 62 EXTRUSION FLOW GUN (FLUID NIPPLE 3/8")



NOZZLE TIP
Reference P. 91

SPARE PARTS

REF.	CODE	DESCRIPTION
1	03546200	NOZZLE TIP HOLDER
2	03807200	NOZZLE GLAND SET
4	03574200	NEEDLE SEAT
5-1	93809200	NEEDLE BAR SET
5-2	03504180	SPRING HOLDER
5-3	03844170	CONICAL SPRING WASHER (8 pcs./1 pk.)
5-4	03067951	PACKING HOLDER
5-5, 5-6	03846170	NEEDLE PACKING SET
5-7	03505180	NEEDLE PACKING SEAT
5-8	03500190	NEEDLE SPRING HOLDER
5-9	06994603	SCREW
6	03501190	NEEDLE SPRING
7	03502190	NEEDLE SPRING SEAT
8	03505200	TRIGGER STUD



REF.	CODE	DESCRIPTION
9	06994103	HEXAGON CAP NUT (2 pcs./1 pk.)
10	03811200	TRIGGER SET
11-1	03810200	UNIVERSAL JOINT NPS 3/8"
11-2	03813200	UNIVERSAL JOINT G 1/4"
11-3	03814200	UNIVERSAL JOINT G 3/8"
13	03638200	COLLAR (option)

AIRLESS TIPS HIGH PRESSURE

REVERSIBLE & FLAT AIRLESS TIPS

HOW TO GET YOUR CODE

VTR200209 Example: VTR200 2 09

Tip Series _____
Pattern width _____
Orifice ϕ inch _____

REVERSIBLE AIRLESS TIPS



Code:
VTR200XXX

FLAT AIRLESS TIPS



Code:
VTR205XXX

ORDER INFORMATION

ORIFICE	STAIN OR LAQUER		OIL		LATEX PAINT		HEAVY LATEX		ELASTOMETRIC / BLOCK FILLER																
	ϕ inch	ϕ mm	ϕ inch	ϕ mm	ϕ inch	ϕ mm	ϕ inch	ϕ mm	.029"	.031"	.033"	.035"	.039"	.043"	.045"	.047"	.049"	.051"	.053"	.055"	.063"	.065"			
	.009"	.011"	.013"	.015"	.017"	.019"	.021"	.023"	.025"	.027"	.029"	.031"	.033"	.035"	.039"	.043"	.045"	.047"	.049"	.051"	.053"	.055"	.063"	.065"	
	0,23	0,28	0,33	0,38	0,43	0,46	0,53	0,58	0,64	0,69	0,74	0,79	0,84	0,89	0,99	1,1	1,14	1,19	1,24	1,31	1,35	1,4	1,6	1,65	
PATTERN WIDTH																									
4" - 6" 100-150	209	211	213	215	217	219	221	223	225																
6" - 8" 150-200	309	311	313	315	317	319	321	323	325	327	329	331	333	335	339	343									
8" - 10" 200-250	409	411	413	415	417	419	421	423	425	427	429	431	433	435	439	443	445	447	449	451	453	455	463	465	
10" - 12" 250-300	509	511	513	515	517	519	521	523	525	527	529	531	533	535	539	543	545	547	549	551	553	555	563	565	
12" - 14" 300-350	609	611	613	615	617	619	621	623	625	627	629	631	633	635	639	643	645	647	649	651	653	655	663	665	
14" - 16" 350-400			713	715	717	719	721	723	725	727	729	731	733	735	739	743	745	747	749	751	753	755	763	765	
16" - 18" 400-450			813	815	817	819	821	823	825	827	829	831	833	835	839	843									
18" - 20" 450-500			913	915	917	919	921	923	925	927	929	931	933	935	939	943									
FLOW RATE																									
l/min	0,34	0,45	0,68	0,91	1,17	1,44	1,78	2,15	2,54	2,91	3,40	3,90	4,43	4,96	6,17	7,30	8,21	8,93	9,73	10,56	11,36	12,30	16,12	16,77	

PRE-ATOMIZED REVERSIBLE & FLAT AIRLESS TIPS

VTR200208 Example: VTR200 2 08

Tip Series _____
Pattern width _____
Orifice ϕ inch _____

REVERSIBLE AIRLESS TIPS



Code:
VTR201XXX

FLAT AIRLESS TIPS



Code:
VTR206XXX

ORDER INFORMATION

ORIFICE	PATTERN WIDTH			
	ϕ inch	ϕ mm	ϕ inch	ϕ mm
	.008"	.010"	.012"	.014"
	0,20	0,25	0,30	0,36
4" - 6" 100-150	208	210	212	214
6" - 8" 150-200	308	310	312	314
8" - 10" 200-250	408	410	412	414
10" - 12" 250-300		510	512	514
12" - 14" 300-350		610	612	614
FLOW RATE				
l/min	0,26	0,42	0,57	0,79



SAFETY GUARD



GASKET

SAFETY GUARD for Reversible Airless Tips

CODE	DESCRIPTION
VTR200998	SAFETY GUARD 11/16"
VTR200999	SAFETY GUARD 7/8"
VTR101251	GASKET



AIRLESS UNITS

ICON-A433N and ICON-A333N KIT

iCon[®] AIRLESS KIT

FEATURES

STANDARD VERSIONS ARE ASSEMBLED ON CART

The kit includes:

- Icon Airless Pump
- Airless Spray Gun ALG-7 TE WB
- Conductive High Pressure Fluid Hose

The UNIT is delivered on a **CART FRAME** which by design includes the **WALL MOUNT**



ORDER INFORMATION

CODE	MODEL	RATIO	FLUID OUTPUT		TYPE	MAX. FLUID PRESS.	GUN MODEL	TYPE OF FILTER	TWIN HOSES
ICON-A433N AIRLESS UNIT									
14000160	ICON-A433N-S1	36:1	88 ml/cyc	5,2 l/min	SUCTION HOSE SET	252 bar	ALG-7 TE WB	100 Mesh	NH-35075 (7.5 m)
14000660	ICON-A433N-S2				HOPPER SET				
ICON-A333N AIRLESS UNIT									
14000170	ICON-A333N-S1	32:1	60 ml/cyc	3,6 l/min	SUCTION HOSE SET	224 bar	ALG-7 TE WB	100 Mesh	NH-35075 (7.5 m)
14000650	ICON-A333N-S2				HOPPER SET				

WALL MOUNT CONVERSION KIT

CODE	DESCRIPTION
04005460	WALL MOUNT CONVERSION KIT
ACCESSORIES	
04005870	HOPPER SET G1 (6 lt.) for A433N
04005510	HOPPER SET G1/2" (6 lt.) for A333N

Available with **SUCTION HOSE** or **HOPPER SET**



HIGH PRESSURE



ICON-A433N and ICON-A333N UNITS

iCon[®] AIRLESS PUMPS



From general wood and metal painting to exterior surface coating up to boat repair, ICON[®] Airless Pumps for medium to high pressure applications are ideally suited to the requirements of the industrial sector. ICON[®] Pumps' strong points are their extremely simple assembly, disassembly, and maintenance, along with their excellent reliability.

FEATURES

STANDARD VERSIONS ARE ASSEMBLED ON CART

- Air Pressure Regulators
- Delivery Paint Filter (TF-8N)
- Dip Tube with Filter
- Fluid Recirculation Hose
- Overpressure Safety Valve



ORDER INFORMATION

CODE	MODEL	CONFIGURATION
14050180	ICON-A433N	AIRLESS UNIT with STAINLESS STEEL Fluid Passages (36:1) Supplied with SUCTION HOSE SET
14000730	ICON-A433N-S3	AIRLESS UNIT with STAINLESS STEEL Fluid Passages (36:1) Supplied with HOPPER SET (6 lt.)
14050190	ICON-A333N	AIRLESS UNIT with STAINLESS STEEL Fluid Passages (32:1) Supplied with SUCTION HOSE SET
14000740	ICON-A333N-S3	AIRLESS UNIT with STAINLESS STEEL Fluid Passages (32:1) Supplied with HOPPER SET (6 lt.)

TECHNICAL DATA		ICON-A433N	ICON-A333N
PLUNGER PUMP:		PP-3688N	PP-3260N
WEIGHT:		46.5 Kg	40 Kg
DIMENSIONS (LxWxH):		496 x 627 x 1164 mm	
PAINT FILTER:	Delivery paint filter	TF-8N (100 Mesh)	
	Fluid suction filter	15 mesh	50 mesh
MAX. FLUID WORKING PRESSURE:		252 bar (25.2 MPa)	224 bar (22.4 MPa)
MAX. AIR INLET PRESSURE:		7.0 bar (0.7 MPa)	
PRESSURE RATIO:		36:1	32:1
WORKING TEMPERATURE:		5°~40° C	
NOISE LEVEL:		99.7 dB(A)	97.2 dB(A)
COMPRESSOR REQUIRED POWER:		> 1.5 Kw	
FLUID OUTPUT:	Max. fluid delivery	88 ml	60 ml
	Max. volume/min.	5.2 l/min	3.6 l/min
NO. of CYCLES per MINUTE		60 cyc	
AIR NIPPLE		G1/4"	
FLUID NIPPLE		G1/4"	

AIRLESS ICON PUMPS



ICON-A233N AIRLESS PUMP

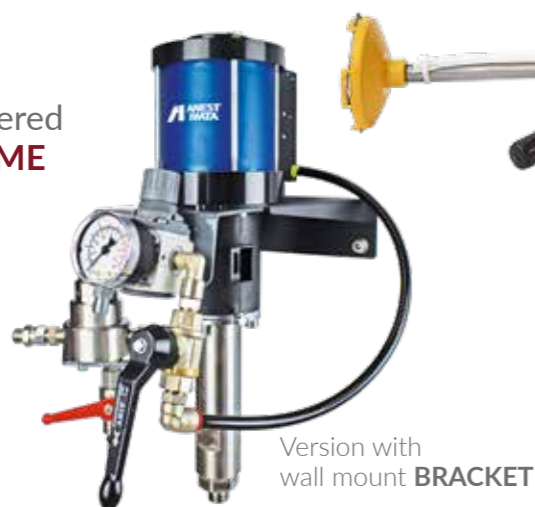
Some serious jobs require a good partner, and the Airless versions of the Anest Iwata Icon X-3 series were developed to be your best workmate during long days of painting. The new cart frame design has the wall support mounted inside and it can work both with the Suction Hose or the Hopper to be as versatile as possible and meet your requirements.

The Pump is compact and therefore easily transportable, thanks to its new compact filter but at the same time its 30:1 ratio will allow you to work with the most viscous paints. Make sure to check out our highly compelling and economical X-3 Kits, consisting of the new Icon X-3 Pump, an ALG-7 TE WB Airless Spray Gun plus one of our updated High-Pressure Hoses.

ICON A233N AIRLESS PUMP

FEATURES

- New Delivery Paint Filter TF-1S (w/100 mesh filter)
- Suction Hose with filter or Hopper set (6 lt.)
- All wetted parts in stainless steel
- Fluid valve seats in carbide
- Hard chromed plate surfaces inside
- Self-adjusting V packings



ICON-A233N AIRLESS KIT

CONFIGURATION of the ICON A233N KIT

ICON PUMP assembled either on **Cart Frame** or **Wall Mount**

- 1 Air Pressure Regulator
- Delivery Paint Filter TF1-S (w/100 mesh filter)
- Suction Hose (w/50 mesh filter) or Hopper Set 6 lt. (w/50 mesh filter)
- High Pressure Hose
- Airless Spray gun ALG-7 TE WB



ICON A233N AIRLESS KIT



ORDER INFORMATION

MODEL	CODE	ASSEMBLED WITH	MULTI SPRAY GUN	GUN FILTER	TWIN HOSE 7.5m
ICON-A233N AIRLESS PUMP and KIT assembled on CART FRAME					
ICON-A233N-S	140027A0	SUCTION HOSE (w/50 mesh filter)	-	-	-
ICON-A233N-S1	140026A0		ALG -7 TE WB	100 Mesh	NH-25075 14156860
ICON-A233N-H	140029A0	HOPPER SET (6lt.) (w/50 mesh filter)	-	-	-
ICON-A233N-H1	140028A0		ALG -7 TE WB	100 Mesh	NH-25075 14156860
ICON-A233N AIRLESS PUMP and KIT assembled on WALL MOUNT					
ICON-A233N-SWM	140031A0	SUCTION HOSE (w/50 mesh filter)	-	-	-
ICON-A233N-SWM1	140030A0		ALG -7 TE WB	100 Mesh	NH-25075 14156860
ICON-A233N-HWM	140033A0	HOPPER SET (6lt.) (w/50 mesh filter)	-	-	-
ICON-A233N-HWM1	140032A0		ALG -7 TE WB	100 Mesh	NH-25075 14156860





ANEST IWATA Italia S.r.l.
Chieri (TO) - ITALY
info@anest-iwata-it.com
www.anest-iwata-coating.com

ANEST IWATA Deutschland GmbH
Leipzig - GERMANY
info@anest-iwata-de.com
www.anest-iwata-coating.com

ANEST IWATA France S.A.
Saint Quentin Fallavier, Lyon - FRANCE
info@anest-iwata-fr.com
www.anest-iwata-coating.com

ANEST IWATA U.K. Ltd.
St. Neots Cambridgeshire - ENGLAND
info@anest-iwata-uk.com
www.anest-iwata-coating.com

ANEST IWATA Iberica S.L.U.
Saint Adrià del Besos - SPAIN
info@anest-iwata-ib.com
www.anest-iwata-coating.com

ANEST IWATA Scandinavia AB.
Partille, Göteborg - SWEDEN
info@anest-iwata-se.com
www.anest-iwata-coating.com

ANEST IWATA Polska Sp. Z o.o.
Jasin / Swarzędz - POLAND
info@anest-iwata-pl.com
www.anest-iwata-coating.com

ANEST IWATA Motherson Coating Equipment Ltd.
Noida - INDIA
sales@aim.motherson.com
www.motherson.com/anest-iwata-motherson.html

ANEST IWATA Taiwan Corporation
Hu-Kuo - TAIWAN R.O.C.
service@anestiwata.com.tw
www.anestiwata.com.tw

PT. ANEST IWATA Indonesia
Jakarta - INDONESIA
www.anest-iwatasoutheastasia.com

NORTH AMERICA
ANEST IWATA USA Inc.
West Chester - Ohio - U.S.A.
inquiry@anestiwata.com - www.anestiwata.com

SOUTH AMERICA
AIRZAP-ANEST IWATA INDÚSTRIA COMÉRCIO Ltda.
Sao Paulo - BRAZIL
contato@anest-iwata.net.br - www.anest-iwata.net.br

RUSSIA
ANEST IWATA Russia LLC
Moscow - RUSSIA
tam@anestiwata.ru - www.anestiwata.ru

AUSTRALIA
ANEST IWATA Australia Pty Ltd.
Sidney - AUSTRALIA
info@anest-iwata.com.au - www.anest-iwata.com.au

SOUTH AFRICA

ANEST IWATA South Africa Pty Ltd.
Johannesburg - REPUBLIC OF SOUTH AFRICA
www.anest-iwata.co.za

ASIA

ANEST IWATA Coating Solutions Corporation
Yokohama - JAPAN
www.anest-iwata.co.jp

ANEST IWATA KOREA Corporation
Ansan City - KOREA
inquiry@aikr.co.kr
www.aikr.co.kr

ANEST IWATA Shanghai Corporation
Shanghai - CHINA
customer@anest-iwata-sh.com
www.anest-iwata-sh.com

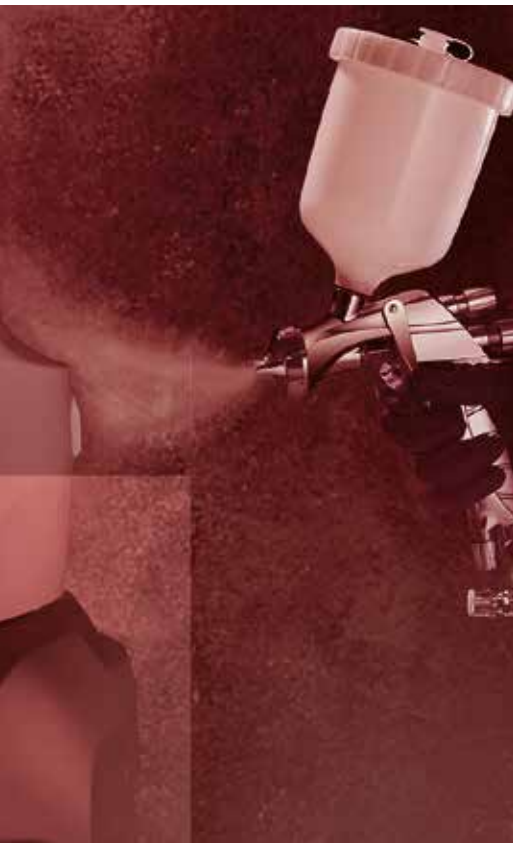
ANEST IWATA Vietnam CO. Ltd.
Ho Chi Minh City - VIETNAM
info@anest-iwata.vn
www.anest-iwatasoutheastasia.com

ANEST IWATA Southeast Asia CO. Ltd.
Bangkok - THAILAND
info@anest-iwata.co.th
www.anest-iwatasoutheastasia.com

HEADQUARTER

ANEST IWATA Corporation
Yokohama - JAPAN
www.anest-iwata.co.jp

ANEST IWATA Strategic Center S.r.l.
Cardano al Campo (VA) - ITALY
info@anest-iwata-st.com
www.anest-iwata-coating.com



2023 CATALOGUE

SPRAY GUNS & ACCESSORIES FOR
GENERAL INDUSTRY